

STR and Environics Domestic  
VisitorView

# Measuring Canadian Travel Patterns

June 5, 2024 Update

2024 Weekly Report



SYMPHONY  
TOURISM  
SERVICES



ENVIRONICS  
RESEARCH

# Purpose

- The Measuring Canadian Travel Patterns report was created to help industry understand their weekly domestic visitors.
- By combining the weekly STR report and Environics' VisitorView data, industry has up to date insights for their destination and can plan strategically how and what visitors to attract.
- This report focuses on visitor analysis to **British Columbia**.





# VisitorView Methodology

- Environics Analytics uses privacy compliant, anonymized mobile movement data to identify devices whose **Daily Common Evening Location** is 60 km or more away from their *Yearly Common Evening Location*.
- Data is aggregated and compared on a weekly basis versus the previous year and week.
  - **(Note:** Year over year data may not compare the **exact** same date range).
- Data is limited to devices that we can reliably infer their *Daily* and *Yearly* Common Evening Locations.
- Data has been standardized and normalized leveraging demographic data and **PRIZM**, their neighbourhood classification system.

## Notes:

- Data is based on the movement of mobile devices travelling within BC from BC or the rest of Canada who have spent one night 60 kms from their mobile device's home location. Therefore it includes all mobile movement - work and contractor travel, relocations within six months' time, visiting friends and relatives and people moving around their own regions.
- The baseline of comparison is 2023, with percentages above 0% indicating higher rates of visitation in 2024 than 2023, and percentages below 0% indicating lower rates of visitation in 2024 than 2023.
- Weekly comparisons may not reflect the exact same date between the two comparison years. Therefore holiday weekends may fall on different weeks and result in higher peaks in the current year. Please refer to the Appendix for date conversions.

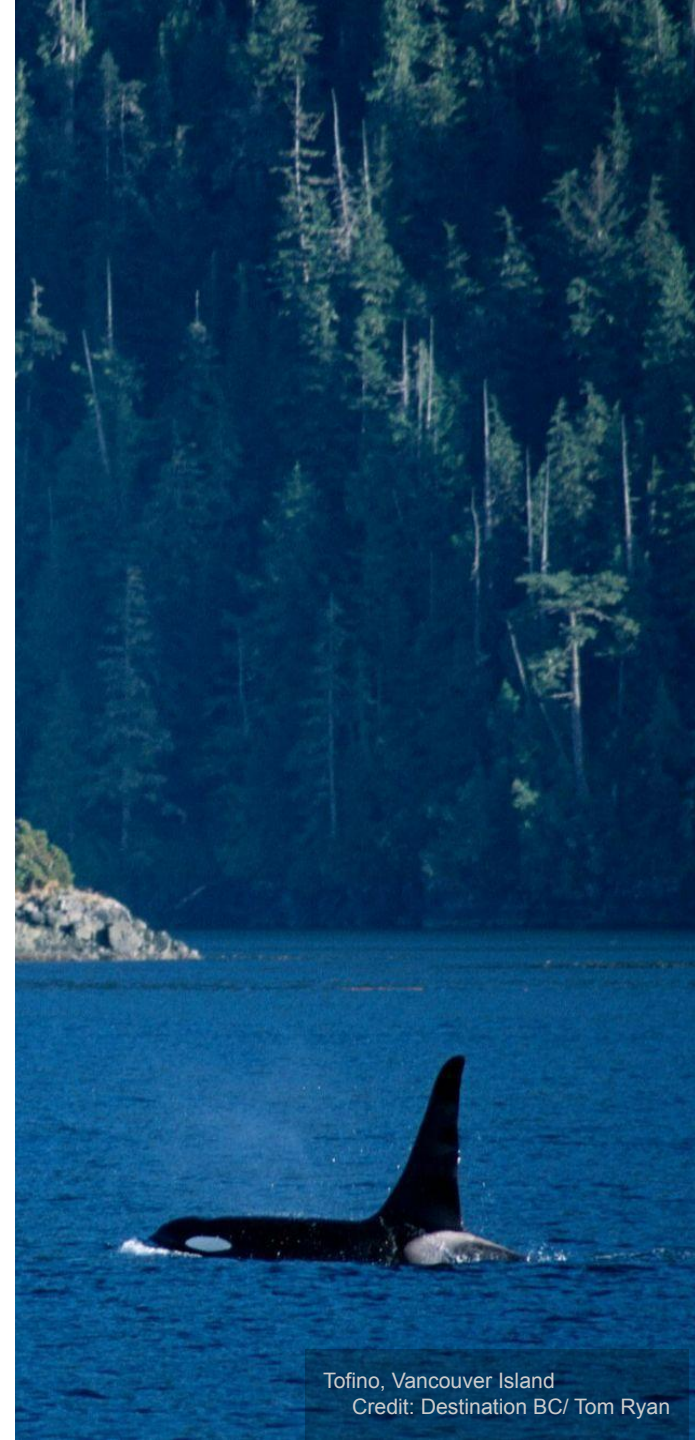
# STR Methodology

- On a daily, weekly and monthly basis, STR processes performance data from hotels all across BC and the world. This data is submitted straight from the source: chain headquarters, management companies, owners and directly from independent hotels. The data used to understand the BC tourism regions' performance compared to BC as a whole and to each other.
- STR delivers confidential data on hotel Occupancy, Average Daily Rate (ADR) and Revenue per Available Room (RevPar), for markets such as the tourism regions of BC and for individual companies who participate.

- **Participate in the STR “STAR” report: Submit your data and receive free reports benchmarking your performance against your market. Sign up today for free here: <https://surveys.str.com/s3/Hotel-Enrollment-Form>**

(or)

- **Email [info@str.com](mailto:info@str.com) to request more information**





# Domestic Overnight Visitors

---

Environics Canada

---

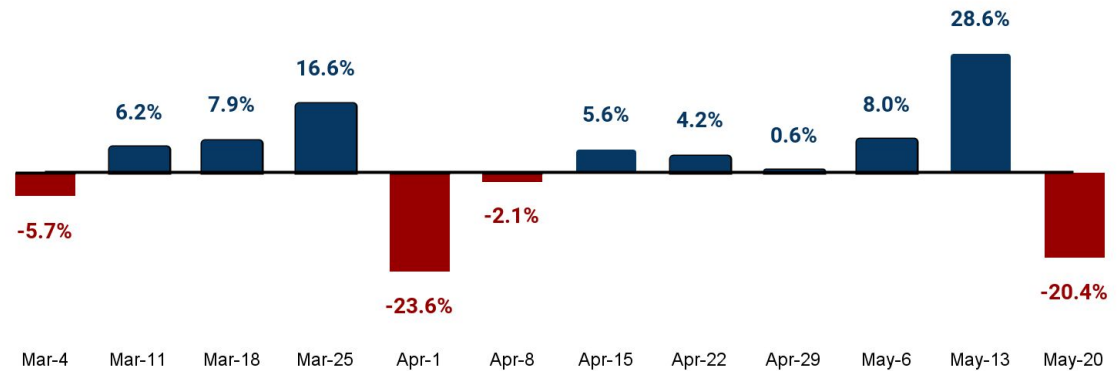
# Domestic Overnight Visitors - Weekly

## BC & Regions

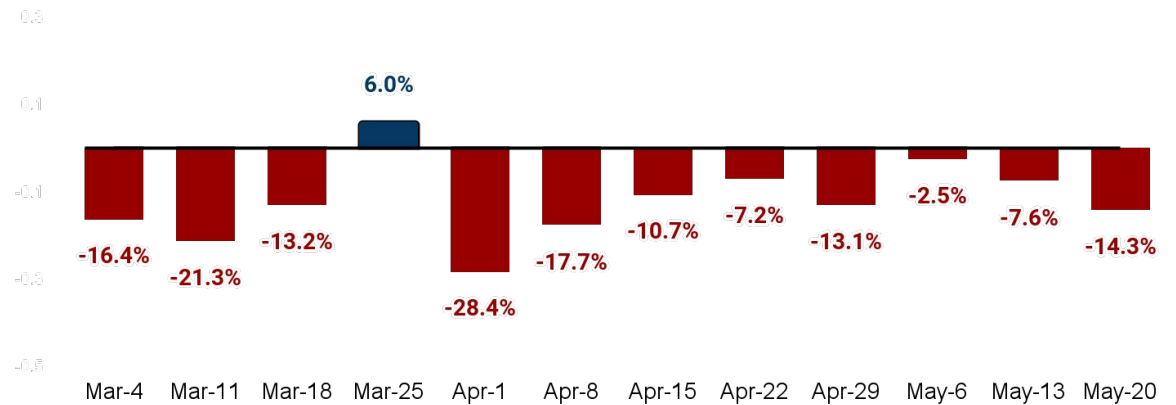
### Key Findings

- British Columbia decreased **20.4%** when comparing Week 21 (May 20 - May 26, 2024) to Week 20 (May 13 - May 19, 2024).
- When comparing Week 21 to Week 20, all regions saw a **decrease** in visitation.
- Year-over-year Overnight Visitation to BC for Week 21 is **down 14.3%** compared to the same week in 2023.

Week-over-Week (%)



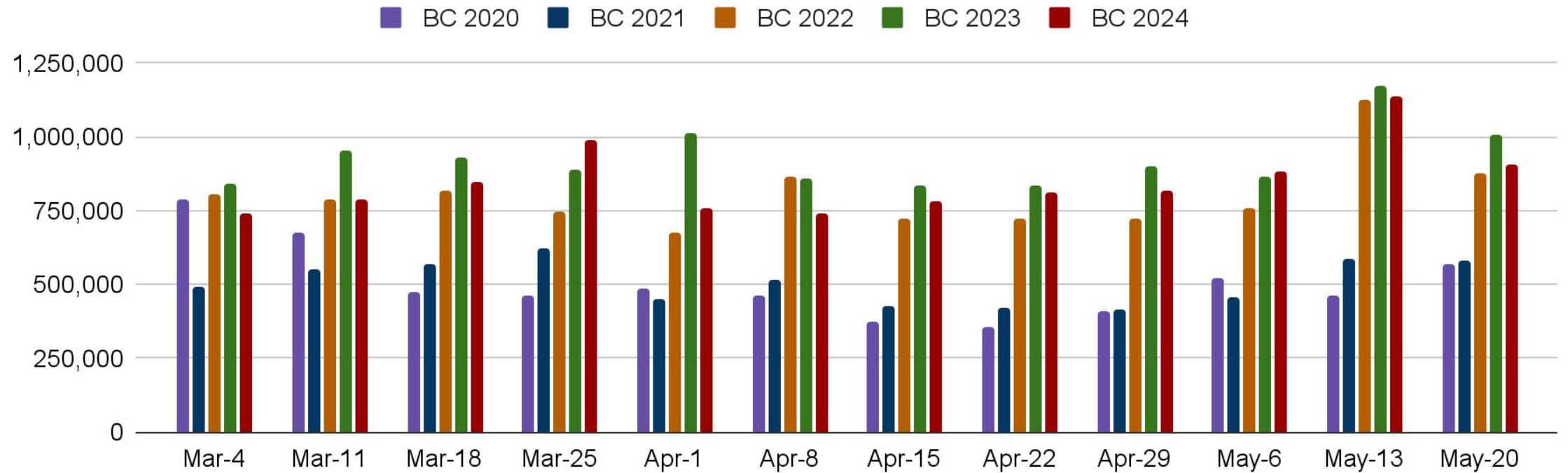
Year-over-Year (%)



# Domestic Overnight Visitors - Weekly

## BC & Regions

Visitors Count - Weekly (2020-2024)

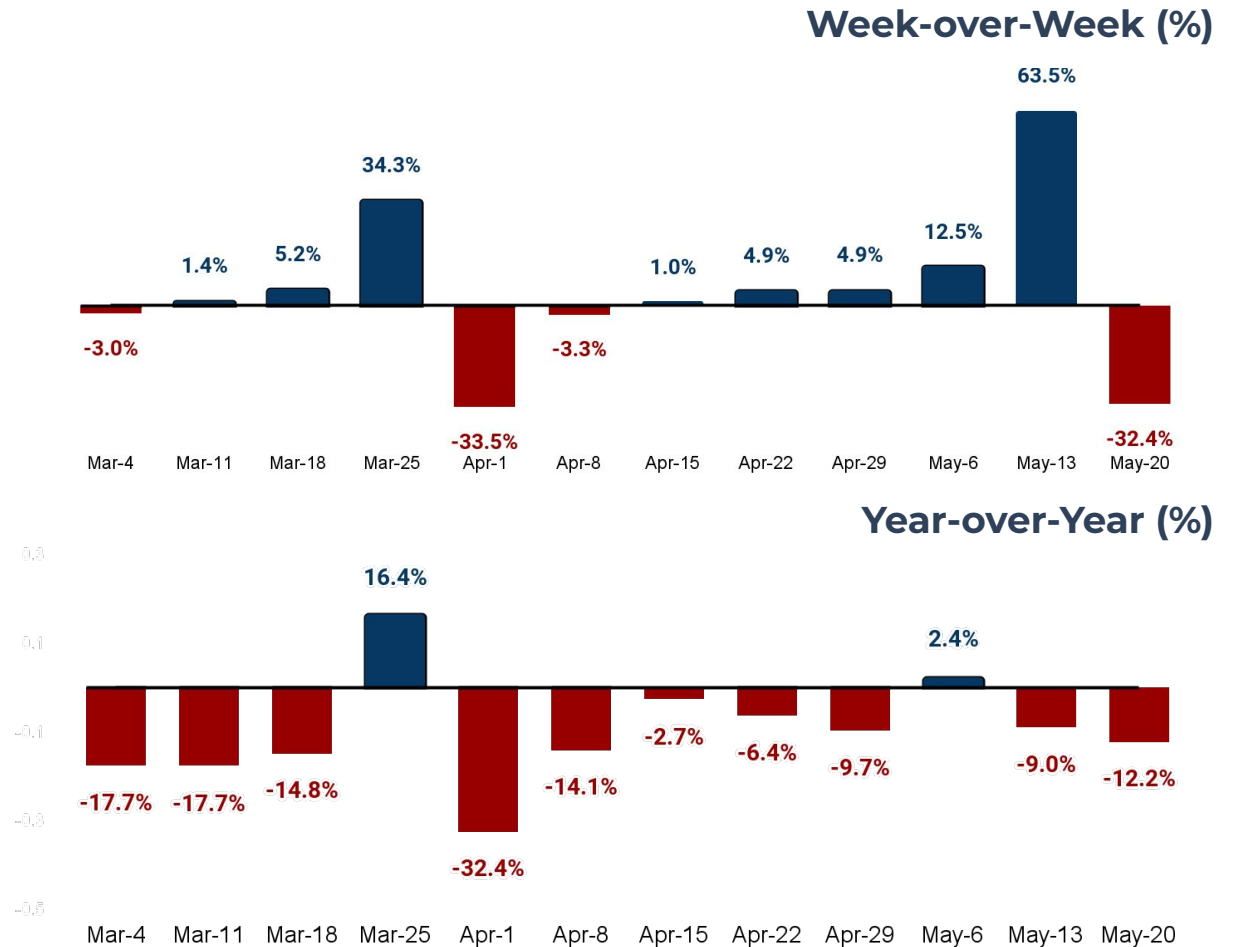


# Domestic Overnight Visitors - Weekly

## Kootenay Rockies Region

### Key Findings

- Visitation to Kootenay Rockies **decreased by 32.4%** comparing current week to the previous week.
- Year-over-year Overnight Visitation to Kootenay Rockies for Week 21 (May 20 - May 26, 2024) was **down 12.2%** compared to the same week in 2023.
- Year-over-year, Kootenay Rockies saw a change in visitation **less** pronounced than BC.

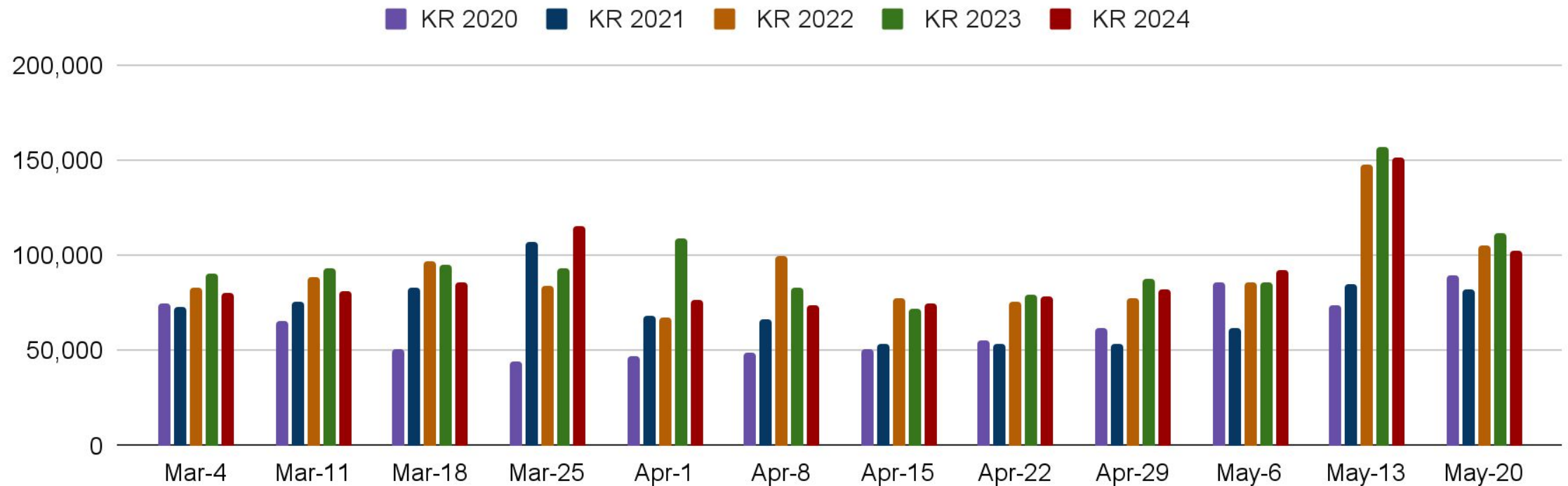




# Domestic Overnight Visitors - Weekly

## Kootenay Rockies Region

Visitors Count - Weekly (2020-2024)





# STR Hospitality Summary

---

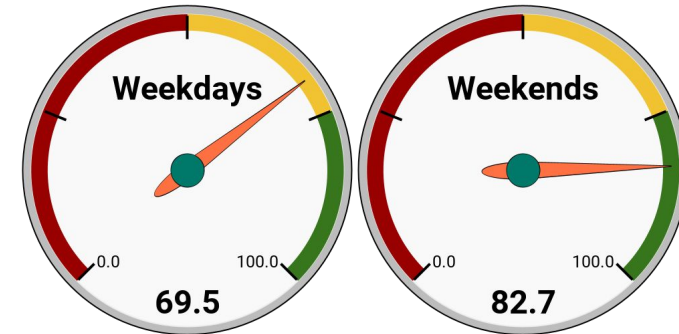
STR/BCHA

# STR Summary BC & Regions

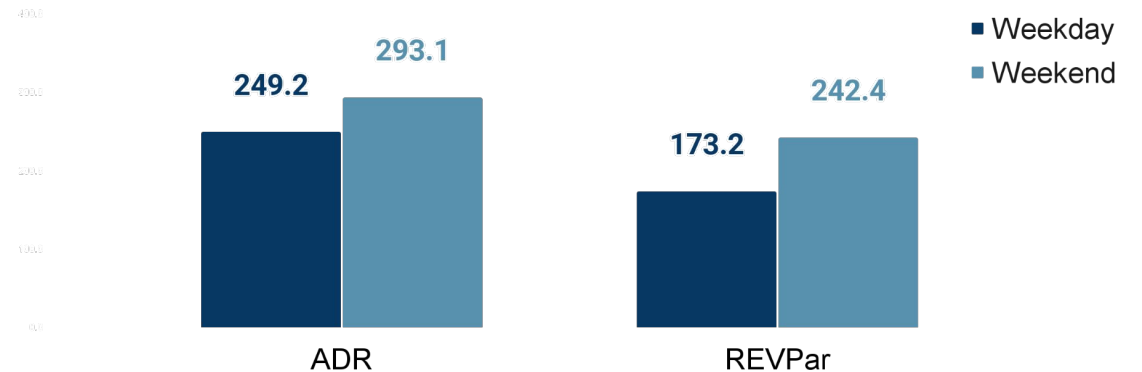
## May 19 - May 25, 2024

- British Columbia had a **69.5%** Occupancy from Sunday-Thursday and a **82.7%** Occupancy during the weekend, unchanged at **0%** compared to the same week in 2023.
- British Columbia had an ADR of **\$249.2** from Sunday-Thursday and an ADR of **\$293.1** during the weekend, up **4.8%** compared to the same week in 2023.
- British Columbia had a RevPAR of **\$173.2** from Sunday-Thursday and a RevPAR of **\$242.4** during the weekend, up **4.8%** compared to the same week in 2023.

### Average Occupancy



### Average of ADR and RevPAR by Weekday and Weekend



### Regional Statistics the Weekend of May 24 - May 25, 2024:

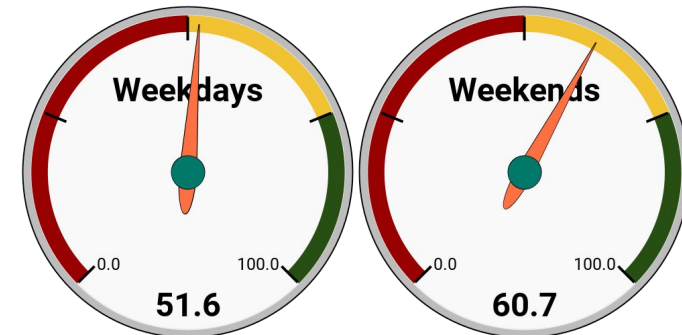
	OCC	ADR	REVPAR
Vancouver	91.9%	\$364.1	\$334.7
Vancouver Island	86.6%	\$298.3	\$258.2
Whistler	66.1%	\$283.6	\$187.5
Thompson Okanagan	73.9%	\$195.3	\$144.3
Northern BC	79%	\$143.7	\$113.6
Kootenay Rockies	60.7%	\$176.9	\$107.4
Cariboo Chilcotin Coast	55.9%	\$144.4	\$80.8

# Kootenay Rockies Summary

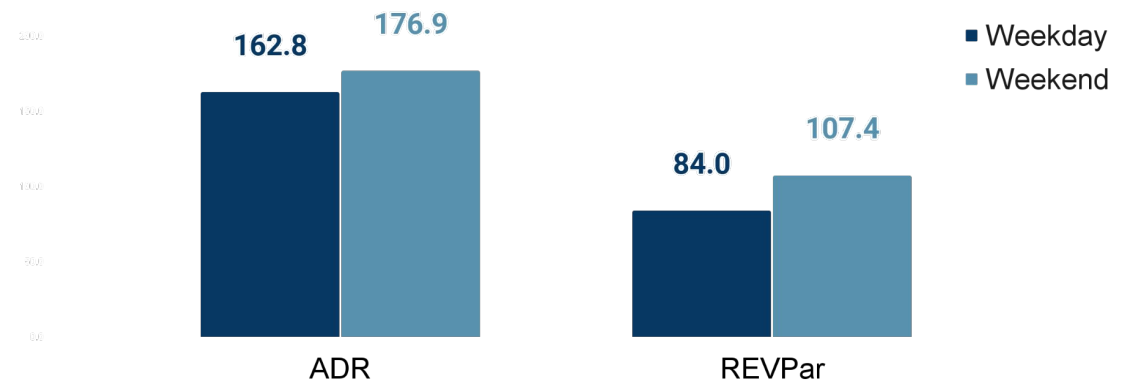
## May 19 - May 25, 2024

- Kootenay Rockies had a **51.6%** Occupancy from Sunday - Thursday and a **60.7%** Occupancy during the weekend, giving the region the **second-lowest** percent Occupancy in BC.
  - Compared to the week of May 20, 2023, Occupancy is down **-1%**
- Kootenay Rockies had an ADR of **\$162.8** from Sunday - Thursday and an ADR of **\$176.9** during the weekend, giving the region the **third-lowest** ADR in BC.
  - Compared to the week of May 20, 2023, ADR is up **5.4%**
- Kootenay Rockies had a RevPAR of **\$84** from Sunday - Thursday and a RevPAR of **\$107.4** during the weekend, giving the region the **second-lowest** RevPAR in BC.
  - Compared to the week of May 20, 2023, RevPAR is up **4.3%**

### Average Occupancy



### Average of ADR and RevPAR by Weekday and Weekend



#### British Columbia:

Weekday (Sunday - Thursday)

Weekend (Friday - Saturday)

Compared to the same week in 2023

	OCC	ADR	REVPAR
Weekday (Sunday - Thursday)	69.5%	\$249.2	\$173.2
Weekend (Friday - Saturday)	82.7%	\$293.1	\$242.4
Compared to the same week in 2023	<b>0%</b>	<b>4.8%</b>	<b>4.8%</b>

# Glossary

- **Occupancy:** Calculated by the number of occupied rooms divided by the number of available rooms that physically exist in a short-term rental.
- **Average Daily Rate (ADR):** Represents the average rental income per paid occupied room in a given time period; however, ADR itself cannot be used to measure a short-term rental performance.
- **Revenue per Available Room (RevPAR):** Calculated by multiplying a short-term rental ADR by its Occupancy rate, an increase in RevPAR most likely indicates an improvement in Occupancy rate and can be used to measure a short-term rental performance.
- **Domestic Overnight Visitors:** Extrapolated from a sample of mobile devices that spent at least one night more than 60KM away from their Yearly Common Evening Location.
- **Common Evening Location:** A location where the device is normally seen between 6PM and 8AM the following morning.

# Notes

## Long **Weekends and Holidays:**

- New Years Day
- Family Day
- Good Friday
- Victoria Day
- Canada Day
- B.C. Day
- Labour Day
- Truth & Reconciliation Day
- Thanksgiving Day
- Remembrance Day
- Christmas Day

## **Notes:**

- The baseline of comparison is 2023, with percentages above 0% indicating higher rates of visitation in 2024 than 2023, and percentages below 0% indicating lower rates of visitation in 2024 than 2023.
- Weekly comparisons may not reflect the exact same date between the two comparison years. Therefore holiday weekends may fall on different weeks and result in higher peaks in the current year. Please refer to the Appendix for date conversions. Ex. Good Friday was April 7 in 2023 (week of April 3) and March in 2024 (week of March 25), this created a leap/fall when comparing year over year.

# Appendix - Date conversions

	Week of - 2023	Week of - 2024
New Years Day	January 2, 2023 (Week 1)	January 1, 2024 (Week 1)
Family Day	February 20, 2023 (Week 8)	February 19, 2024 (Week 8)
Good Friday	April 7, 2023 (Week 14)	March 29, 2024 (Week 13)
Victoria Day	May 22, 2023 (Week 21)	May 20, 2024 (Week 21)
Canada Day		
B.C. Day		
Labour Day		
Truth & Reconciliation Day		
Thanksgiving Day		
Remembrance Day		
Christmas Day		

# Appendix 2 - Domestic Overnight Visitors

## Weekly Year Over Year (2024 vs. 2023) Variation - Part 1

Week #	Week Of:	British Columbia	Thompson Okanagan	Cariboo Chilcotin Coast	Kootenay Rockies	Northern BC	Vancouver Island	Vancouver Coast and Mountains
35	August 28 - September 3	-13.0%	-27.8%	-6.5%	-12.4%	-1.4%	-4.5%	-13.9%
36	September 4 - September 10	-16.1%	-23.0%	-10.4%	-15.5%	-5.9%	-9.9%	-20.0%
37	September 11 - September 17	-10.5%	-14.2%	-6.3%	-6.7%	-0.2%	-8.5%	-15.9%
38	September 18 - September 24	-9.4%	-11.2%	-3.2%	-6.4%	-2.6%	-8.6%	-13.2%
39	September 25 - October 1	-5.5%	-6.7%	0.8%	-7.4%	3.5%	-1.4%	-9.8%
40	October 2 - October 8	-5.8%	-10.4%	-6.1%	-7.3%	-6.1%	-3.0%	-4.6%
41	October 9 - October 15	-11.1%	-13.1%	-1.0%	-6.0%	-6.8%	-10.5%	-14.9%
42	October 16 - October 22	-5.9%	-4.2%	4.0%	-1.1%	-4.7%	-2.7%	-7.9%
43	October 23 - October 29	-7.4%	-7.0%	-3.0%	-7.5%	-6.8%	-1.9%	-10.3%
44	October 30 - November 5	-12.9%	-8.1%	-8.2%	-6.8%	-5.6%	-9.2%	-25.5%
45	November 6 - November 12	-4.0%	-1.0%	-4.6%	-0.8%	-1.6%	1.4%	-11.3%
46	November 13 - November 19	-12.8%	-9.9%	-3.3%	-0.2%	-11.9%	-5.0%	-21.5%
47	November 20 - November 26	-10.7%	-7.5%	3.9%	-5.6%	-9.1%	-3.7%	-18.7%
48	November 27 - December 3	-10.7%	-5.6%	0.8%	-10.0%	-9.4%	0.2%	-19.0%
49	December 4 - December 10	-18.9%	-13.9%	-8.8%	-7.7%	-15.0%	-11.0%	-27.7%
50	December 11 - December 17	-19.5%	-13.7%	-10.2%	-10.8%	-15.6%	-13.2%	-29.5%
51	December 18 - December 24	-6.8%	-2.7%	5.0%	-2.3%	-0.1%	1.1%	-17.1%
52	December 25 - December 31	-4.7%	1.1%	5.5%	-3.7%	-11.6%	6.8%	-15.5%



# Appendix 2 - Domestic Overnight Visitors

## Weekly Year Over Year (2024 vs. 2023) Variation - Part 2

Week #	Week Of:	British Columbia	Thompson Okanagan	Cariboo Chilcotin Coast	Kootenay Rockies	Northern BC	Vancouver Island	Vancouver Coast and Mountains
1	January 1 - January 7	-10.7%	-6.8%	4.5%	-8.4%	-20.3%	4.6%	-18.6%
2	January 8 - January 14	-21.5%	-17.9%	-15.7%	-26.1%	-23.2%	-14.5%	-26.0%
3	January 15 - January 21	-24.5%	-20.7%	-10.5%	-13.7%	-19.1%	-21.9%	-32.6%
4	January 22 - January 28	-18.6%	-13.0%	-2.7%	-5.8%	-17.8%	-16.5%	-26.6%
5	January 29 - February 4	-18.2%	-14.0%	-5.7%	-9.7%	-15.6%	-11.4%	-27.3%
6	February 5 - February 11	-13.6%	-11.9%	7.3%	-11.6%	-17.3%	-2.8%	-21.3%
7	February 12 - February 18	-13.8%	-9.3%	-1.9%	-12.4%	-14.6%	-5.6%	-22.0%
8	February 19 - February 25	-9.7%	-7.1%	16.0%	-8.5%	-15.0%	1.4%	-16.6%
9	February 26 - March 3	-12.0%	-8.4%	4.3%	-9.7%	-17.8%	-3.2%	-17.5%
10	March 4 - March 10	-16.4%	-17.0%	-7.1%	-17.7%	-20.3%	-15.7%	-17.8%
11	March 11 - March 17	-21.3%	-22.9%	-10.0%	-17.7%	-17.8%	-18.1%	-25.7%
12	March 18 - March 24	-13.2%	-13.0%	0.4%	-14.8%	-10.6%	-4.4%	-19.1%
13	March 25 - March 31	6.0%	20.2%	38.3%	16.4%	-6.9%	19.6%	-8.0%
14	April 1 - April 7	-28.4%	-34.9%	-22.6%	-32.4%	-19.1%	-28.4%	-27.2%
15	April 8 - April 14	-17.7%	-18.3%	-2.2%	-14.1%	-17.7%	-12.6%	-23.1%
16	April 15 - April 21	-10.7%	-12.2%	2.6%	-2.7%	-12.8%	-4.8%	-15.0%

# Appendix 2 - Domestic Overnight Visitors

## Weekly Year Over Year (2024 vs. 2023) Variation - Part 3

Week #	Week Of:	British Columbia	Thompson Okanagan	Cariboo Chilcotin Coast	Kootenay Rockies	Northern BC	Vancouver Island	Vancouver Coast and Mountains
17	April 22 - April 28	-7.2%	-7.0%	3.2%	-6.4%	-0.6%	-2.0%	-12.2%
18	April 29 - May 5	-13.1%	-12.4%	-2.8%	-9.7%	-10.6%	-12.0%	-17.5%
19	May 6 - May 12	-2.5%	3.6%	5.4%	2.4%	2.1%	-0.8%	-7.5%
20	May 13 - May 19	-7.6%	-6.3%	-5.3%	-9.0%	-4.2%	-4.0%	-13.6%
21	May 20 - May 26	-14.3%	-9.7%	-11.6%	-12.2%	-8.3%	-9.3%	-23.0%

# Contact Us



SYMPHONY  
TOURISM  
SERVICES

Robb MacDonald

*Managing Director, Symphony Tourism Services*

Email: [rmacdonald@totabc.com](mailto:rmacdonald@totabc.com)

[symphonytourismservices.com](http://symphonytourismservices.com)